



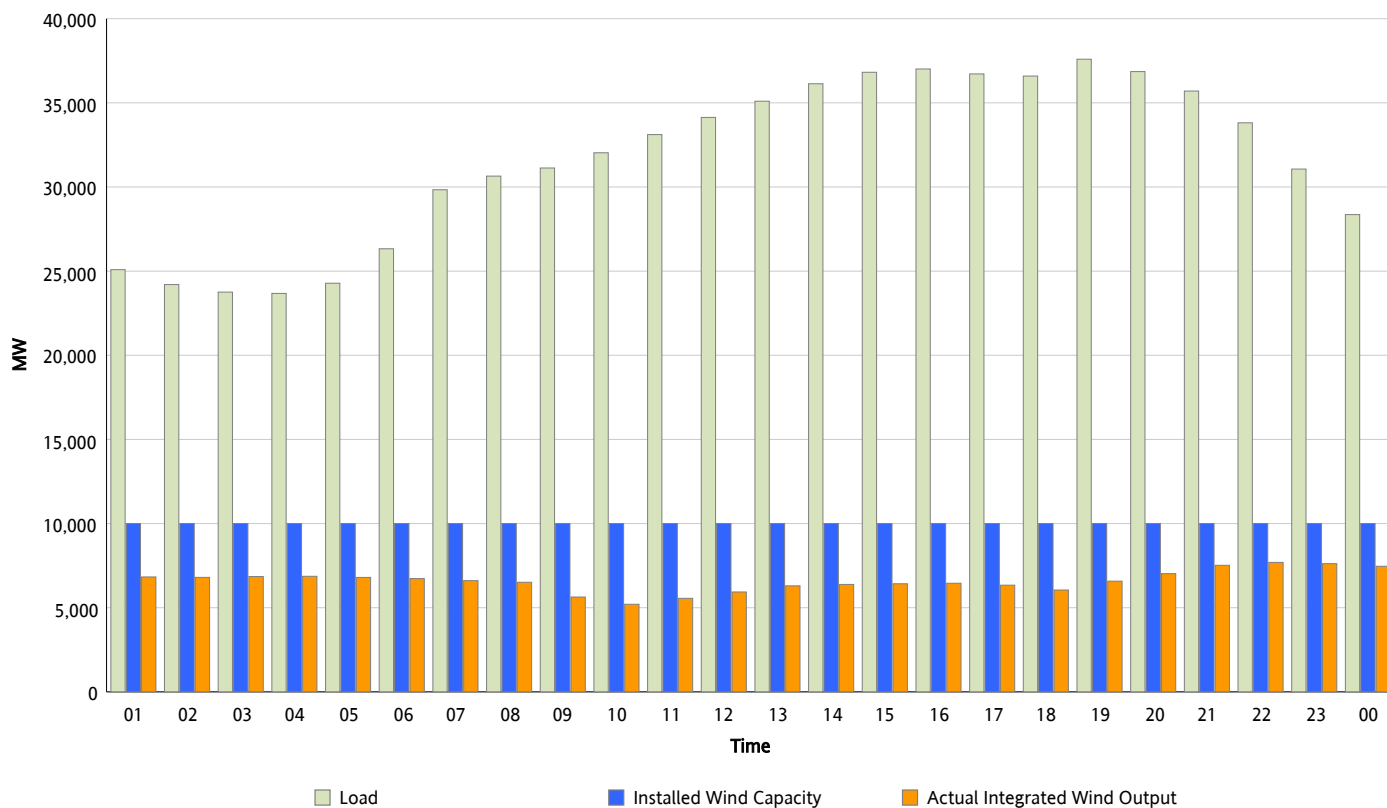
## ERCOT Grid Operations

### Wind Integration Report : 11/08/2012

Peak Load	37,594 MW
Load Peak Hour (HE)	19
Wind Over Peak	6,578 MW
Wind Record 06/19/12	8,368 MW
Max Wind Value*	7,788 MW
Wind Peak Time	21:40
Wind Integration %	23.33 %

#### Hourly Average Actual Load vs. Actual Wind Output

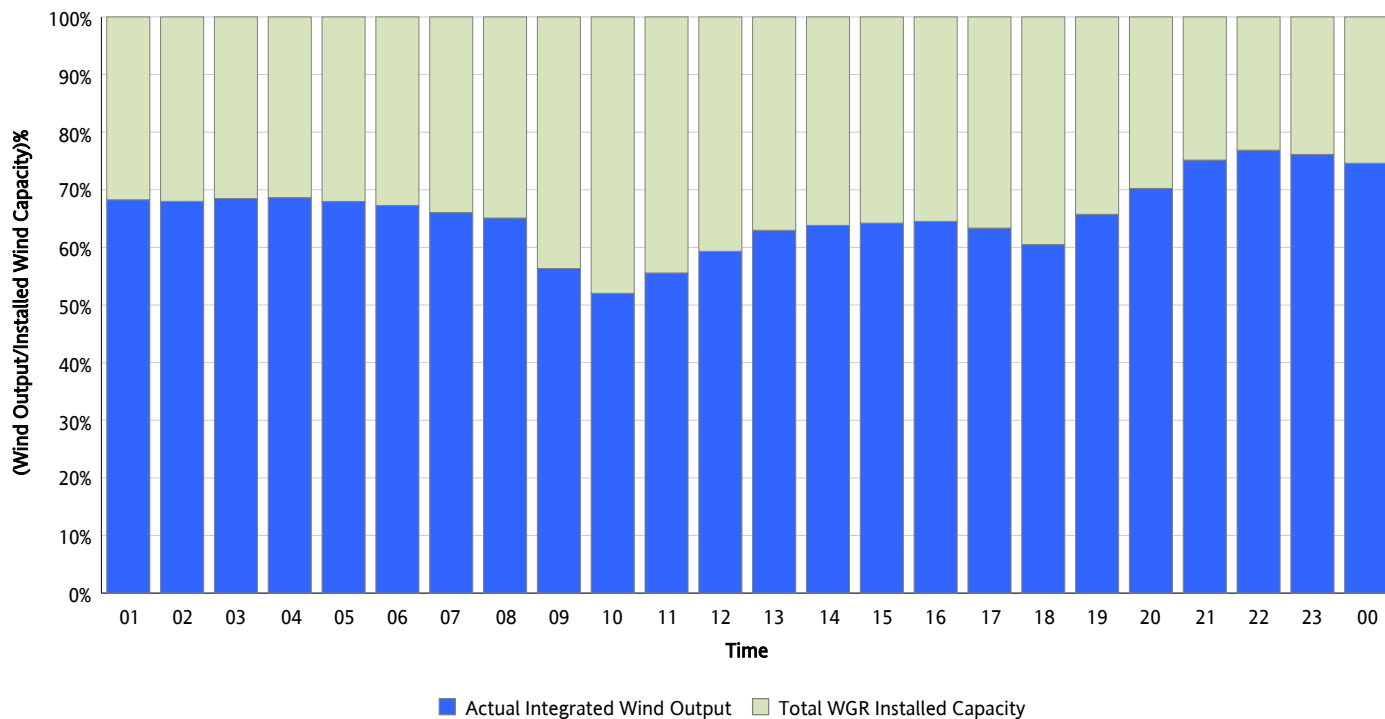
11/08/2012



\* Wind Record and Wind Max represent instantaneous values and the rest of the values are integrated over the hour

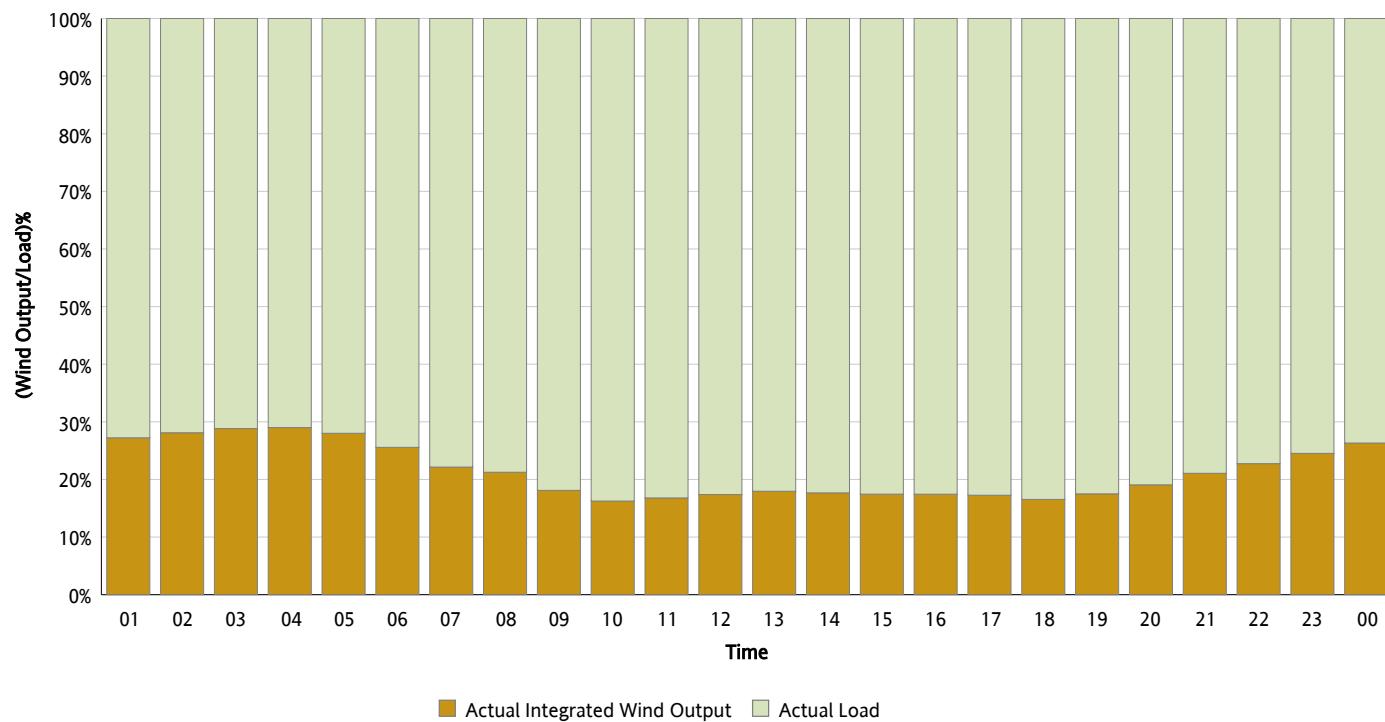
## Actual Wind Output as a Percentage of the Total Installed Wind Capacity

11/08/2012



## Actual Wind Output as a Percentage of the ERCOT Load

11/08/2012



## ERCOT Load vs. Actual Wind Output

11/01/2012 - 11/08/2012

